



YEARS  
**20**  
1999 2019

GET ON BOARD!





## ACHIEVE WEIGHING PERFECTION WITH OUTSET



Optimization of production processes



Time savings during loading anywhere



Prevention of vehicle wear and maintenance costs



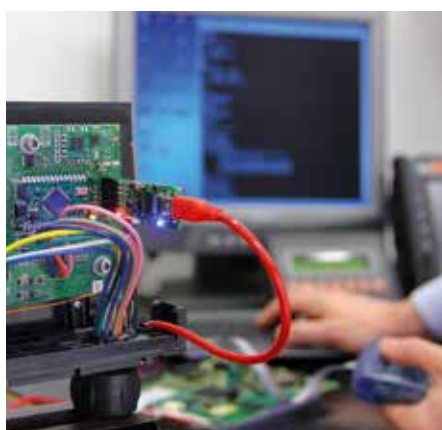
Systems can be reused in subsequent applications



Prevention of overload penalties



Easy-to-use systems with simple maintenance



## TO US SECURITY CARRIES A GREAT WEIGHT

Professional solutions for on-board weighing management, new and useful devices in order to avoid time wasting and heavy sanctions, while optimizing the loading.

### A COMPANY CLEARLY AHEAD OF THE CROWD

Outset Srl has been one of the first European company to introduce on the market the on-board weighing for commercial vehicles. From the very start it offered tested products capable to improve its customers' business, maximizing the advantages of precise, efficient weighing while loading: rationalizing the use of time, reducing operating costs, safe travel respecting road transport laws and eliminating the risk of administrative fines and penalties. Thanks to more twenty years of experience, Outset's management is able to offer a wide range of technologically advanced instruments that optimize loads on commercial, earthmoving and logistics vehicles.



### THE VALUE-ADDED OF CUSTOMIZED SERVICE

The mission that Outset has pursued from the very start is to provide its customers with added value through personalized product consulting before and after the sale. In fact, the company realized that satisfying the needs of its customers meant accompanying them through the entire process to understand their problems and supply the right products and services. Through specialized technicians that the company trains itself, Outset is able to provide state-of-the-art products and services that anticipate market trends.

### R&D TO CREATE THE BEST POSSIBLE FUTURE

Today, Outset operates in Europe and in many other Countries and makes constant, significant investments in R&D to improve its products and develop new innovative instruments that incorporate the best new technology while maintaining its main distinguishing characteristic: extreme simplicity of use. The company is especially focused on new market trends and, for this reason, a great deal of research is conducted "on site", working directly with operators to anticipate their needs. In addition, Outset has an extensive network of authorized sales and installation centres and intends to continuously expand them to improve distribution worldwide.





## OUR CUSTOMERS' SECTORS



**A TRUE SOLUTION FOR EACH TRUCK**



**ARTICULATED LORRY**

LANX 2.0 / LANX WL / LANX NEXT



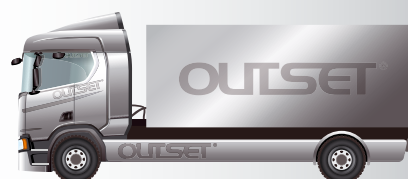
**TANK TRUCK**

LANX 2.0 / LANX WL / LANX NEXT



**CURTAINSIDER TRUCK**

LANX 2.0 / LANX WL / LANX NEXT



**RIGID TRACTOR**

LANX 2.0



**TRUCK AND FULL TRAILER**

LANX 2.0



**REAR TIPPER**

LANX 2.0





## LANX INSTALLATIONS



Lanx 2.0 in the driver's cab



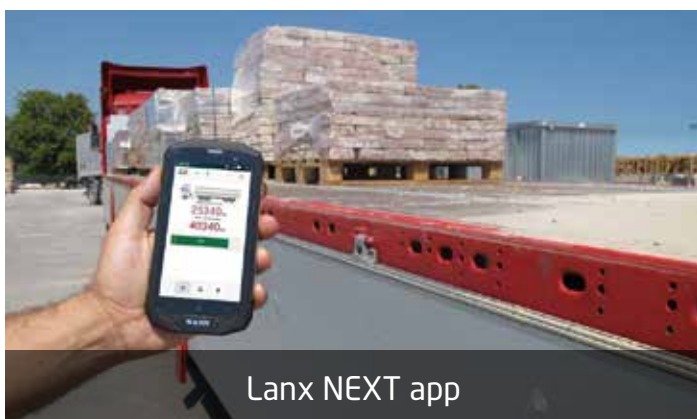
ES010 pressure sensors



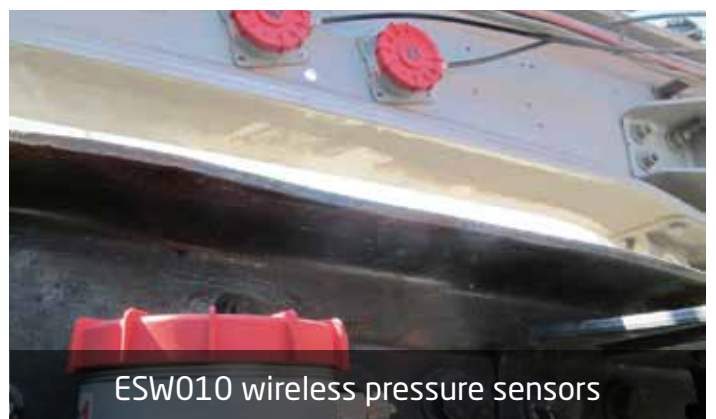
Lanx WL in the driver's cab



ESW010 wireless pressure sensors



Lanx NEXT app



ESW010 wireless pressure sensors



## LANX NEXT - next future... wireless



LANX NEXT is the new concept of totally wireless weighing which provides a real time display of the net and gross total weight of the vehicle, directly on Android and iOS devices. Through the LANX NEXT App the entire loading phase is managed easily by Smartphone, with the use of a Hotspot device connected directly to the cigarette lighter socket in the cab. Wi-Fi technology enables communication with the wireless sensors positioned on the vehicle suspensions and with the App of the Android or iOS device. New generation technology, which is quick and easy to install, for an advanced competitive on board weighing system.



### FEATURES

- Real time weight reading for net or gross loads and vehicle gross weight (V.G.W.).
- 24 Vcc direct power supply with cigarette lighter socket. Maximum consumption 0,5 A.
- Waterproof system, solid construction and capable of tolerating extreme working conditions.
- Total safety of the Lanx system since it does not affect any vital part of the vehicle.
- Weighing system suitable for air suspensions.

### ADVANTAGES

- Display of weight always available
- Available for ANDROID and iOS devices
- Wireless on board weighing during loading
- Simple and quick installation
- No fine for overloading
- Reusable system

### ACCURACY

- Air suspensions 0 ÷ 1%



## LANX WL - the new wireless technology



The new LANX WL system control unit is installed directly in the cab and provides a real-time display of the net, gross, semi-trailer and tractor axle weights, partial weights and with possibility also of the overloading acoustic alarm. LANX WL uses a variety of wireless digital sensors positioned on the vehicle's suspensions and has an alphanumeric screen that displays all weight data. This has been planned purposely for clients who intend to equip their fleet with a valid weighing system at an extremely competitive price. The system pays for itself immediately because knowing the weight of the load when you travel means optimizing transport times and economic yield in complete safety.



### FEATURES

- Real time weight reading for net or gross loads, vehicle gross weight (V.G.W.) and individual axle loads for both truck and trailer thanks to the new wireless digital sensors.
- Partial weight reading function for knowing the exact weight loaded for each customer during the same journey.
- 24 Vcc direct power supply. Maximum consumption 0,5 A.
- Relay control output for connecting Acoustical/Optical programmable devices.
- Waterproof system, solid construction and capable of tolerating extreme working conditions.
- Total safety of the Lanx system since it does not affect any vital part of the vehicle.

### ADVANTAGES

- Wireless on board weighing during loading
- Simple and quick installation
- No fine for overloading
- Payload within legal limits
- Reusable system
- Management of different number of semi-trailers

### ACCURACY

- Air suspensions 0 ÷ 1%

## LANX 2.0 - global view is its strenght



The control unit of the LANX 2.0 system is directly installed in the driver's cab and displays the weight loaded on-board in real time. Readings are displayed axle by axle, net and gross or partial. LANX 2.0 uses a variety of digital sensors positioned on the vehicle's suspensions and displays all data on an easy to read display, without having to push any keys. In addition, weight data can be printed by on-board mini-printer and it can also connect to any satellite system. The system pays for itself immediately because knowing the weight of the load when you travel means optimizing transport times and economic yield in complete safety.



Printer

Outset tracking data



Transmission data cable RS232



### FEATURES

- Real time weight reading for net or gross loads, vehicle gross weight (V.G.W.) and individual axle loads for both truck and trailer.
- Partial weight reading function for knowing the exact weight loaded for each customer during the same journey.
- 24 Vcc direct power supply. Maximum consumption 0,5 A.
- Relay control output for connecting Acoustical/Optical programmable devices.
- Possibility of printing the weight data using optional printer.
- Waterproof system, solid construction and capable of tolerating extreme working conditions.
- Total safety of the Lanx system since it does not affect any vital part of the vehicle.
- Weighing system suitable for any type of vehicle.
- Possibility of data transmission via GPRS

### ADVANTAGES

- Convenient on-board weighing during loading
- No fine for overloading
- Protection against early wear of the vehicle
- Payload within legal limits
- Reusable system
- Automatic management of an unlimited number of trailers and semi-trailers

### ACCURACY

- Air or hydraulic suspensions 0 ÷ 1%
- Mixed suspensions 0 ÷ 2 %
- Rear Dump Trailer (mechanical suspensions) 0 ÷ 0,5%

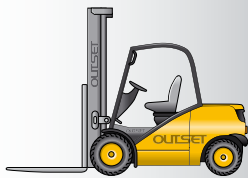
**The most precise of our systems**

## CASE HISTORY - COMMERCIAL VEHICLES



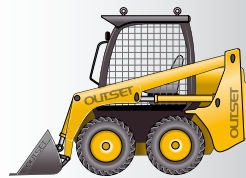


## A TRUE SOLUTION FOR EACH VEHICLE



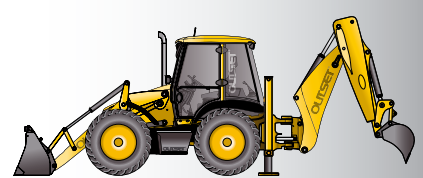
**FORK-LIFT TRUCK**

VISION EVO / E.T. / VIPER



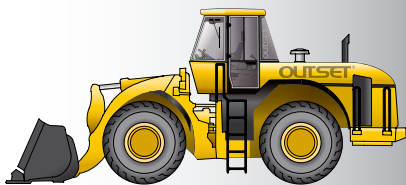
**COMPACT WHEEL LOADER**

VISION EVO / E.T.



**BACKHOE LOADER**

VISION EVO / E.T.



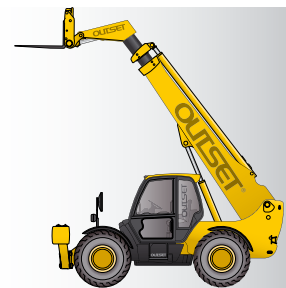
**WHEEL LOADER**

VISION EVO / E.T.



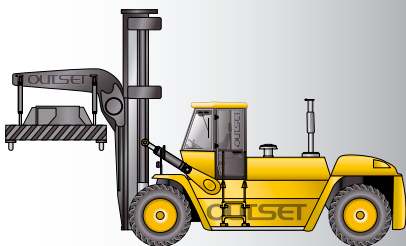
**EXCAVATOR**

VISION EVO



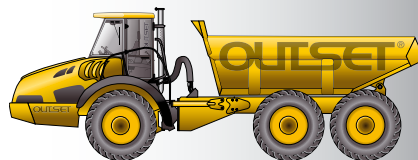
**TELESCOPIC HANDLER**

VISION EVO / E.T. / VIPER



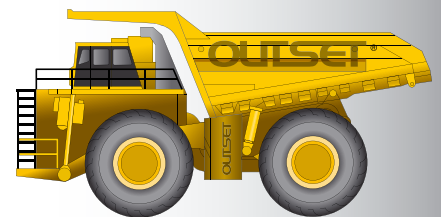
**REACH STACKER**

VISION EVO / E.T. / VIPER



**ARTICULATED DUMP TRUCK**

VISION EVO / E.T.



**RIGID DUMP TRUCK**

LANX HD



## VISION EVOLUTION - E.T. - VIPER INSTALLATIONS



VISION EVOLUTION in the driver's cab



Angle sensor on excavator



NEW E.T. in the driver's cab



Proximity switches on wheel loader



NEW VIPER on fork-lift truck



NEW VIPER on pallet truck

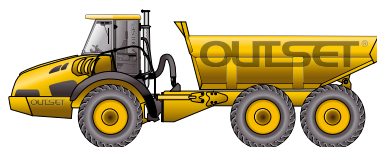
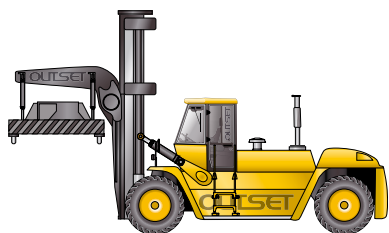


## E.T. - technology from a new world



E.T. is a dynamic on-board weighing system, distinguished for its remarkably competitive cost and its user-friendliness, which immediately displays the updated weight of the material being handled. Advanced technology has been used to create an intuitive instrument with all the essential functions, thus providing the ideal solution for weighing loads on front loaders, fork-lift trucks, articulated dumper trucks and telescopic handlers, with a low investment that can stand up to any comparison. It even allows data printing by means of an optional compact printer in the cab.

Printer and ticket ►



### ADVANTAGES

- Dynamic weighing
- 3,5" Color display
- Excellent value for money
- Small dimension
- User friendly
- Reliable
- Simple installation
- Reusable system

### FEATURES

- Automatic tare acquirement
- Setting up of the maximum load in two methods
- Last lift zeroing
- Angle sensors or proximity sensors

### DISPLAY

- Partial weight
- Total weight
- Number of cycles
- Type of material

### AUTOMATIC FUNCTIONS

- Storage capacity until two different calibrations
- Storage capacity until 10 different products
- Stand-by function
- Multi-material function
- Diagnostic

### PRINTER (optional)

- Paper roll:
  - Loaded product
  - Progressive number of printed tickets
  - Date and time
  - Printing of the single load
  - Total of each load
  - Conversion in m3
  - Multi-material printing



## VISION EVOLUTION - one step ahead



▲ Transmission data cable RS232

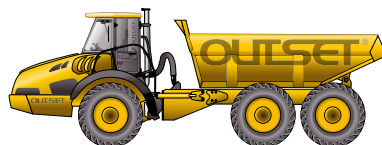
Paper roll printer ▼



Outset tracking data ▲



VISION EVOLUTION is a dynamic, on board weighing system for earthmoving and logistical vehicles. It is the ultimate innovation in on-board weighing systems with its large colour graphics display for real-time viewing of data, a user-friendly icon menu and navigation wheel system with a central confirmation button for browsing through menus. It allows data export and transmission as well as the printing of data to ensure continuous updating and management of loading activities. Connection to an external camera is a valuable aid during vehicle manoeuvring operations, and guarantees greater safety with the advantage of using a single display. The dynamic weighing is carried out during the movements of the vehicle without stopping the lifting operation.



### ADVANTAGES

- Dynamic weighing
- Large colour display
- Icon based menu
- Wheel keyboard for navigation
- Various interfaces
- Management of last bucket
- External camera
- Reusable system
- Transmission data

### FEATURES

- Vehicle plates, haulier, destination and purpose of transport
- Code and description client
- Code and description material
- Automatic tare acquirement
- Setting up of the maximum load for each vehicle
- Last lift zeroing or dosage
- Coding and description truck
- Coding and description project
- Coding and description drivers

### DISPLAY

- Partial and total weight
- Unit of measure
- Number of cycles
- Name or client code (1.000)
- Name or material code (200)
- Vehicle's plate number (500)
- Driver's name (50)
- Project code (100)

### AUTOMATIC FUNCTIONS

- Storage capacity until two different calibrations
- Weighing height automatic variation on the excavator version
- Memory Card SD

### PRINTER (optional)

- Paper print roll or ticket model:
  - Company's heading with address
  - Products and name of the loaded client
  - Driver's name
  - Date and time
  - Plate number of the vehicle loaded
  - Project code
  - Printing of the single load
  - Total of each load
  - Summary organized by different material

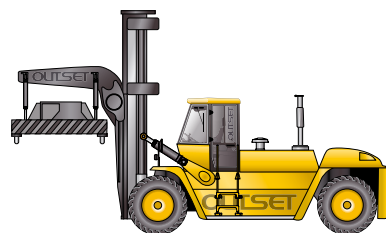
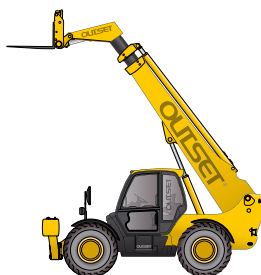
## VIPER - on the alert for a visibile weight



On-board weighing for fork-lift trucks has become more and more essential over the years; it is usefull during the loading process such as packing-list on storage and stock control. It provides economic weight calculations of the materials, optimization of the means of transport stowage, the storage of materials or to define pallets stack. Our weighing system provides to carry out the update static weighing in real-time with the system unit set in the cab.



◀ Printer and ticket



### ADVANTAGES

- Excellent value for money
- User friendly
- Small dimension
- Suitable for all capacities
- Simple autonomous installation
- Reusable system

### FEATURES

- Addition / Subtraction of partial weight to the total weight
- Setting up of the maximum load
- Diagnostic menu
- Error adjustment
- Setup menu with pin code

### DISPLAY

- Partial weight
- Total weight
- Unit of measure

### AUTOMATIC FUNCTIONS

- Storage capacity and selection of driver or material

### PRINTER (optional)

- Paper print roll:
  - ID fork-lift or fork-lift's plate number
  - Driver's name or type of material
  - Date and time
  - Total weight with unit of measure

## LANX HD - only for heavy duty work



The control unit of the LANX HD system is directly installed in the driver's cab and displays weight loaded on-board in real time. It allows a reading axle by axle, net and gross or partial. Moreover it allows to manage the materials moved and to select the operators or the destination. LANX HD uses digital sensors positioned on the vehicle's suspensions and displays all data on an easy to read display, without having to push any keys. All round trips are automatically memorized without the requirement for operator intervention. The internal database allows display of reports for each round trip, including material, operator or destination, date, time and weight data, as well as daily, weekly and monthly reports with individual and overall totals for all loads transported. All weighing data and individual reports can be transmitted via GPRS or printed out on a specially designed printer located in the cab. The USB reader connects with the LANX HD system allows to save the weights made through a USB Flash Drive device. The system pays for itself immediately because knowing the weight of the load when you travel means optimizing transport times and economic yield in complete safety.

▼ Printer and ticket



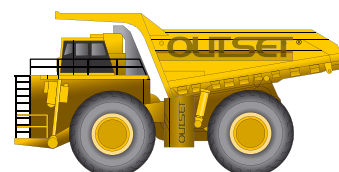
Outset tracking data ▼



▲ Transmission data cable RS232



USB reader ▲



### FEATURES

- LANX HD display in the driver's cab
- Digital pressure sensors ES160 or ES400 on each suspensions
- External optical devices



Lanx HD in the driver's cab

### ADVANTAGES

- Convenient on-board weighing during loading
- Automatic memorization of weight, date and time
- Management of materials and operators/destinations
- Load database
- Productivity checks on a daily, weekly and monthly basis
- Programmable alarm limits for loading/overloading, with external optical devices
- Protection against early wear of the vehicle
- Possibility of data transmission via GPRS
- Reusable system

### ACCURACY

- Hydropneumatic Suspensions 0 ÷ 3%



## CASE HISTORY - EARTHMOVING & LOGISTICS



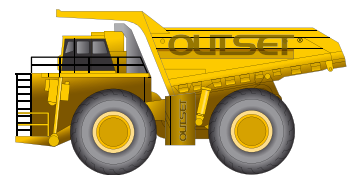
## OTD - Outset Tracking Data



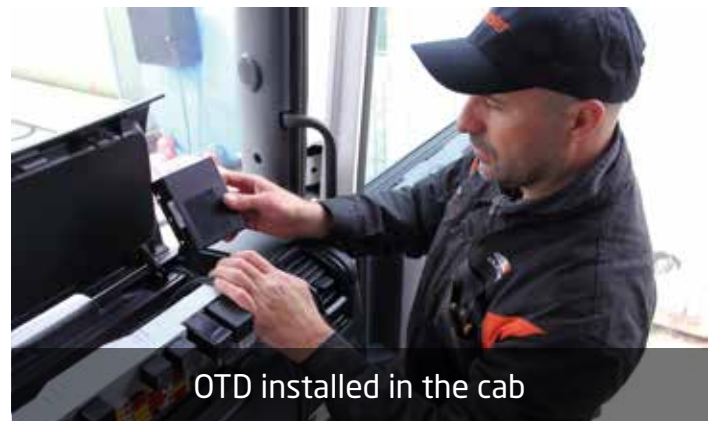
OTD (Outset Tracking Data) it's a tracking & tracing highly integrated device which can be used to monitoring your payload, to tracking your vehicles and to managing your weighing data with reports directly in your office pc, smartphone or tablet. The included GSM/GPRS module and an high sensitivity GPS/GLONASS receiver allows to manage vehicle access and several type of features. The extreme flexibility of the OTD device makes it possible to use it for different applications. It is possible to create customized reports based on the weighing data collected.



◀ OTD reports



OTD customized project



OTD installed in the cab

### FEATURES

- Weighing data management
- TPMS data management
- Anomaly detection
- GPS tracking with maps
- 24/7 continuous monitoring
- Cloud data collection
- Web-based portal





## TPMS - correct pressure... longer life!



The TPMS pressure and temperature control system allows direct and constant monitoring of the condition of the tyres on your vehicle. The in-cab display not only receives information about the tyres on the truck, but also obtains data for the connected trailer, thanks to the installed Smart Booster; this allows easy automatic readings for multiple trailers with no need for any additional equipment. The TPMS system gives drivers the assurance of always having the right tyre pressure, thus reducing excessive fuel consumption and keeping the vehicle under proper control. The display can also be connected to a GPS system to send any data or alarms detected by the TPMS device to the office.



Outset tracking data ▲



### ADVANTAGES

- Extensive alarm and configuration functions
- Display connects to continuous power to ensure full-time monitoring
- Entire system designed to suit all types of commercial vehicles
- Monitoring of up to 38 separate tyres
- Smart Booster allows long-distance radio communication
- Hand Tool and Smart Booster can communicate to configure and view the sensors installed on the trailer
- System easy to use and set up
- Possibility of data transmission via GPS

### 7 good reasons to install the TPMS

- Protection from premature tyre wear
- Prevention of tyre failure through detection of even the slightest damage
- Reduction of fuel consumption and maintenance costs for the company
- Reduction of exhaust gas emissions to help protect the environment
- Reduction of wear and damage to shock absorbers, suspension and other vital parts of the vehicle
- Constant monitoring of tyre pressure for improved driving comfort
- Control of braking to help reduce the possibility of accidents



## TPMS INSTALLATIONS



Display ST in the driver's cab



External sensors TPMS



Display DIN in the driver's cab



Smart Booster on the trailer



Display RS232 in the driver's cab



External antenna



**TRAVEL  
SAFELY**



## EXPOSITIONS









OUTSET srl - Italy - Sandrigo (VI)  
tel +39 0444 751028 - info@outset.it

[www.outset.it](http://www.outset.it)