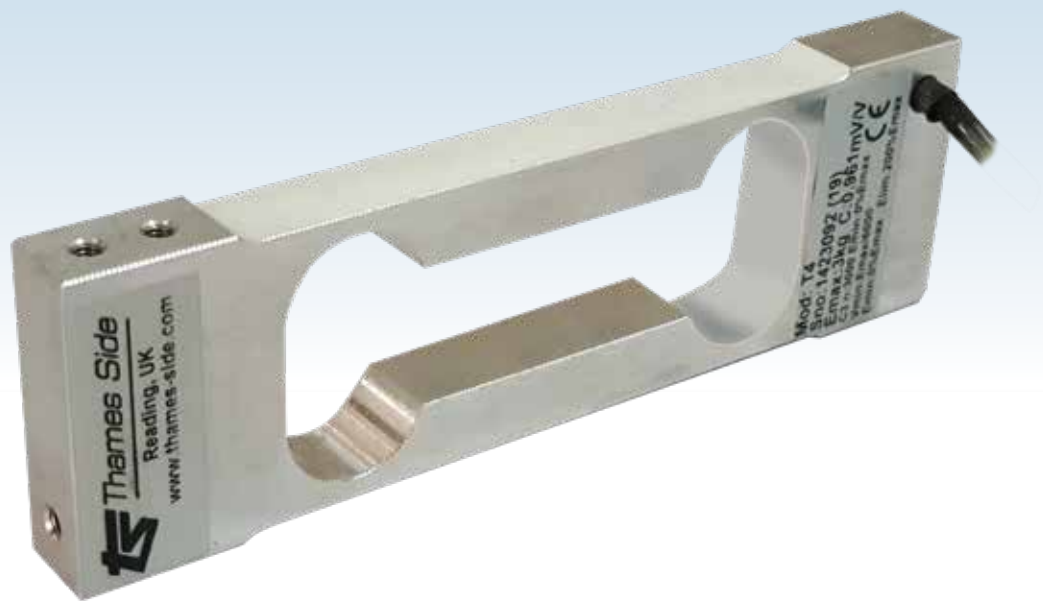


ALUMINIUM SINGLE POINT LOAD CELL

capacities 0.3kg - 3kg

NEW

This double bending beam single point load cell is manufactured from high quality aluminium alloy. Its design allows for high accuracy weight measurement with off-centre loads. It's potted and sealed to IP66.

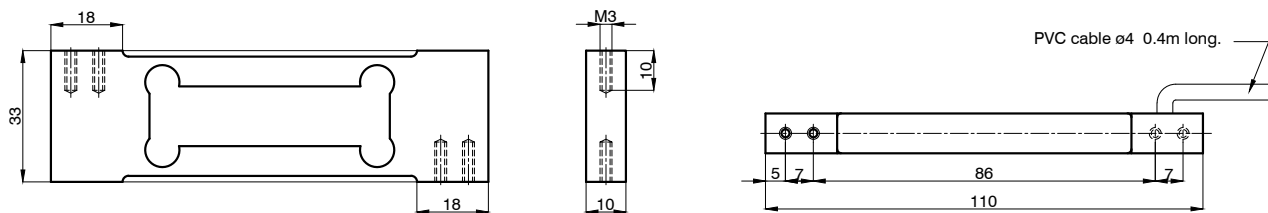
Typical applications include single point platforms up to 200x200mm in size, dosing machines as well as filling scales.

- Double bending beam load cell
- High quality aluminium alloy load sensor
- High accuracy with off-centre loads
- Potted and silicone sealed to IP66
- Wide operating temperature range
- 3000 divisions
- Combined error +/- 0.017%
- 1 year warranty
- 200 x 200mm maximum platform size (load cell placed centrally under the platform)

T4

technical specification...

Thames Side

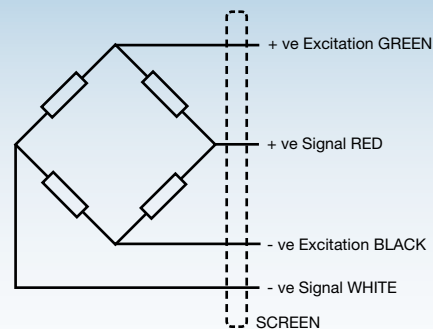


All dimensions in mm

T4 Load Cell

	Load cell specification	Units
Load Cell Capacity (E_{max})	0.3, 0.6, 1.2, 3	kg
Rated Output (S_n)	0.9	mV/V \pm 0.2 %
Accuracy class	3000	-
Combined Error	$< \pm 0.017$	% S_n
Non-repeatability	$< \pm 0.01$	% S_n
Minimum load cell interval (V_{min}) = E_{max} / Y	$E_{max} / 6000$	kg
Creep (30 minutes)	$< \pm 0.016$	% S_n
Temperature Effect on Zero Balance	$< \pm 0.01$	% $S_n / 5^\circ C$
Temperature Effect on Span	$< \pm 0.006$	% $S_n / 5^\circ C$
Compensated Temperature Range	-10 to +40	$^\circ C$
Operating Temperature Range	-20 to +70	$^\circ C$
Safe Overload	150	% E_{max} *
Ultimate Overload	200	% E_{max} *
Zero Balance	$< \pm 2$	% S_n
Input Resistance	400	$\Omega \pm 20$
Output Resistance	350	$\Omega \pm 3$
Insulation Resistance	> 5000	M Ω @ 100V
Recommended Supply Voltage	5-15	V
Maximum Supply Voltage	15	V
Environmental Protection	IP66	-
Maximum deflection at E_{max}	0.3 - 0.5	mm
Cable Length	0.4	m
Cable Material	PVC	-
Nominal Shipping Weight	0.15	kg

* Load limit applies to central loads only. Load limit for off-centre loads will be lower.



Electrical Connections

Via 4 core, 4mm diameter, screened PVC cable.
Screen not connected electrically to load cell.

Construction

Load cell manufactured from high quality aluminium alloy

Thames Side Sensors India Pvt. Ltd.

A subsidiary of Thames Side Sensors Ltd. (UK)

C-6 & C-7, Hind Saurashtra Industrial Estate, Near Mittal Industrial Estate,
Marol Naka, Andheri-Kurla Road, Andheri-East, Mumbai-400 059

T: +91 22 2850 6711

E:sales@thames-side.in

www.thames-side.in

CIN U31908MH2011FTC219481



Issue: IN/T4.06.19

Our policy is one of continuous product enhancement. We therefore reserve the right to incorporate technical modifications without prior notification.

www.thames-side.in