



Key Features



Fire / Hot-Spot Detection

Detects fires and hot spots without smoke, from a few meters up to 6km, day or night.



Proprietary FD Algorithm

Flame behavior analysis for accurate identification and zero false alarms.



Multiple Lens Options

A wide range of lens options to ensure effective coverage for all projects.

Key Benefits



Multiple Alarm Types

Visual, Serial, TCP/IP, ONVIF and Contact Closure alarms signal an alarm state.



Versatility

Can be used simultaneously for fire detection or prevention, security, and equipment monitoring.



Rugged Design

Ruggedly designed to withstand the harshest environmental conditions.

Sii AT FD

A thermal surveillance camera with onboard fire detection and hot spot analytics to ensure a quick response and disaster prevention.



24/7 Security Solutions



Recycling / Waste Management

Fires are a huge risk in waste management, putting both people and property at risk. Thermal cameras can instantaneously alert to an overheating electrical component, both static and on a conveyor belt. Cameras alert to spontaneous combustion fire from fluff piles, or chemicals, ensuring a fast response.



Critical Infrastructure

Thermal cameras can passively monitor and protect critical infrastructure from the threat of fire. Cameras strategically placed within the site can help monitor critical areas and provide an alert if there is a risk of fire, or flames.



Commercial

Fire and fire-hazard are a threat to warehouses and other commercial properties. Thermal cameras can be placed inside or outside to monitor high risk areas 24/7 and send an immediate alert on detection of heat or fire.

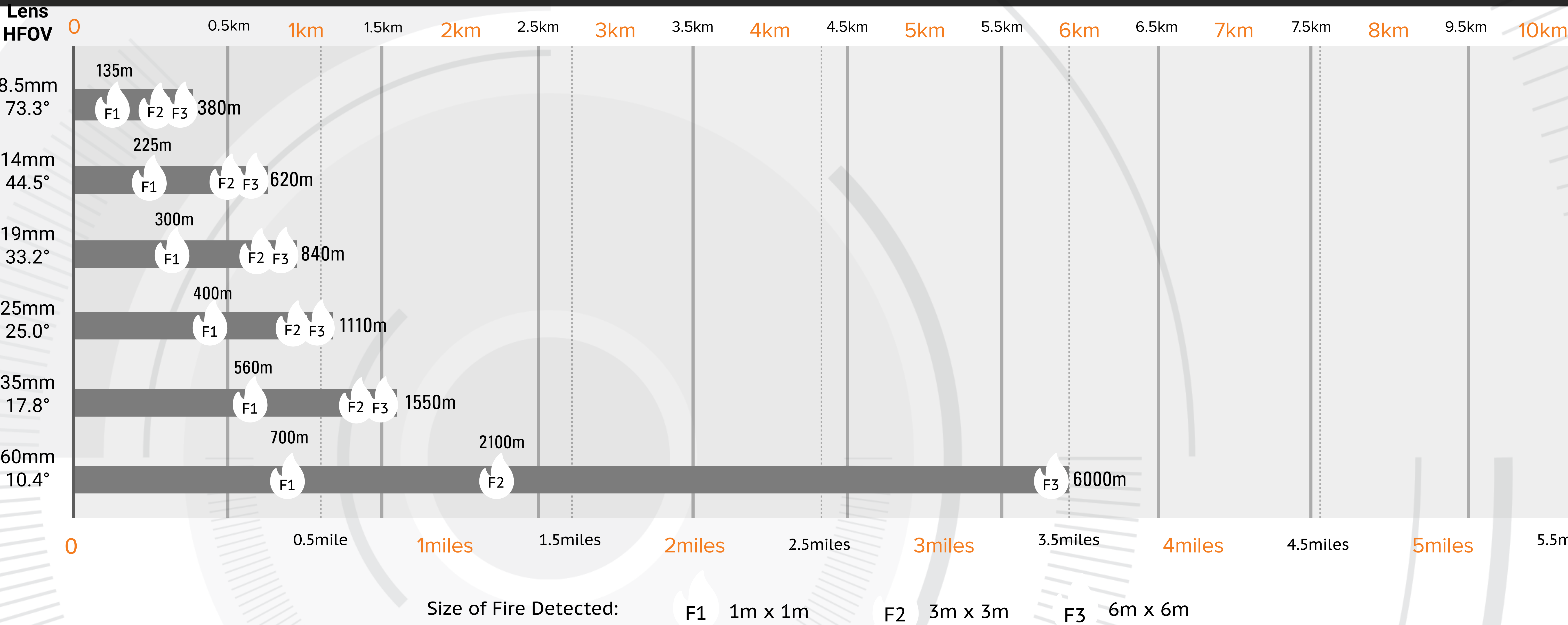


City Surveillance

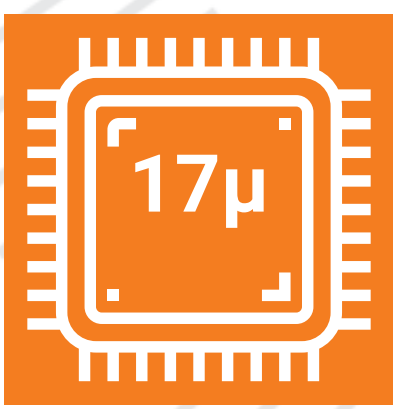
Thermal cameras can passively cover a wide area and can be successfully used to monitor fires within a town or city, especially historic areas traditionally built from wood.

Fire Detection

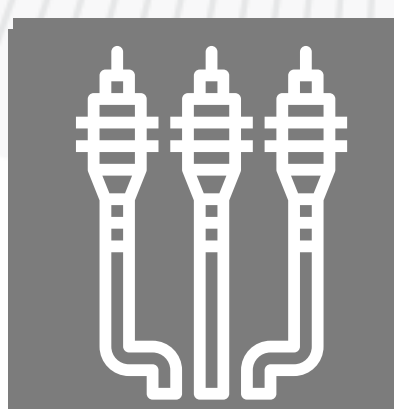
Hot Spot Identification



Specifications Overview



Imager Type
Uncooled 17μ
8-14μm



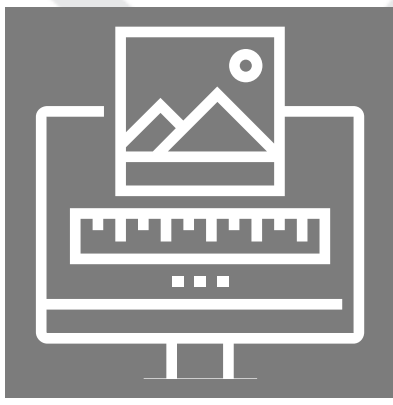
Video Output
Analog Video or
H.264/MJPEG



Certifications
CE, FCC



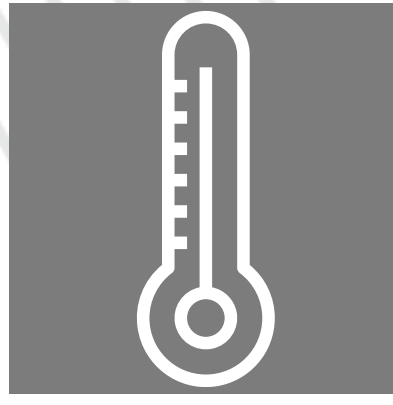
Alert Types
Visual, Serial, TCP/
IP, ONVIF and Contact
Closure



Resolution
640 x 480



Focus
Fixed (Athermal)



Operating Temperature
-40° to +60°C



Environmental Rating
IP66



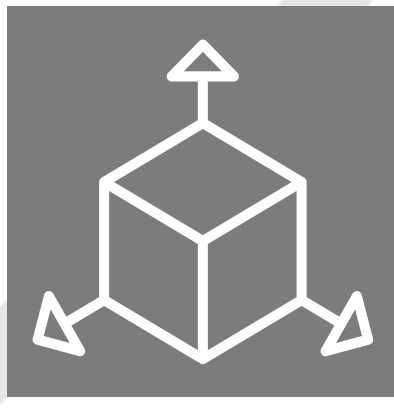
Sensitivity
NETD: <50°mK



Power Input
Analog: 12 – 32VDC
IP: 12VDC or POE
(802.3af)



Hot Spot Threshold
0° to +90° C



Unit Dimensions (LxWxH)
202mm x 135mm x 169mm
7.95" x 5.32" x 6.65"



Lens Options
8.5, 14.2, 19,
25, 35, 60



Communication Protocol
Opgal, ONVIF Profile S



Time to Detect
Hot Spot: Immediate
Fire: 2 seconds of
continuous detection



Weight
3.15kg max.
<7lbs



CLICK HERE FOR FULL SPECS
or go to <https://www.opgal.com/products/sii-at/>