

PLC-ANALYZER pro 6

PLC-Logic analysis in no time

SIMATIC S7
SIMATIC S5
SINUMERIK
SIMOTION
CoDeSys
Allen-Bradley
TwinCAT
BOSCH Rexroth
SELECTION
MITSUBISHI
SCHNEIDER
MODICON
PHOENIX
OMRON
FANUC
PILZ
ABB
B&R
..

S7 TIA

Videotrack

CoDeSys

OPC UA

TwinCAT

Allen-Bradley

AD_USB-Box®

External measured values via USB

Compatible with
TIA-Portal

SIMATIC
cycle precise*

S7-1200 / 1500
optimized data block access

Supports all common PLC systems
uses existing PLC connection
simultaneous recording possible

Failure diagnosis ✓

Long term recording ✓

System documentation ✓

Installation / Service ✓

Predictive maintenance ✓

Condition monitoring ✓

Cycle-time optimisation ✓

BLACKBOX 4 Edge

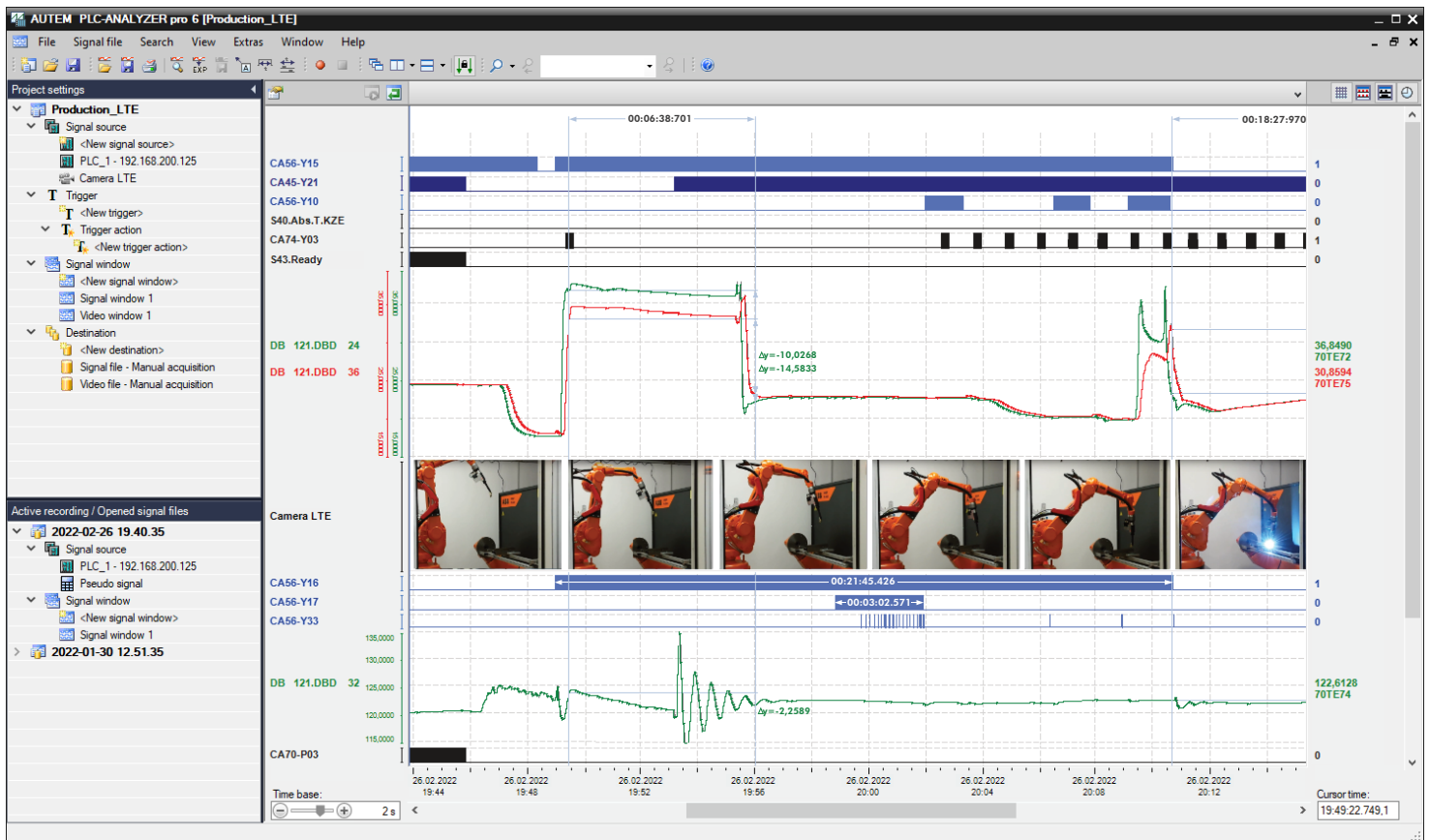


Easy and intuitive to use

Complex failures rapidly analysed

AUTEM

SIMATIC, SIMATIC FIELD PG, SINUMERIK, SIMOTION, Siemens LOGO!, S7-1200, S7-1500, C7, M7, TIA-Portal are trademarks of Siemens AG. All mentioned product- and company names are trademarks of their respective owners. * depending on PLC type.



Fields of application

- Failure diagnosis in PLC systems
- Detecting and localizing of sporadic errors
- Analysis and optimization / cycle time reduction
- Long-term recording of measured values
- QA and documentation, TPM/OEE, EU-Machinery directive
- Installation, development, maintenance

PLC-ANALYZER pro 6 is a software system for logic analysis and recording of measured values in PLC-controlled facilities. Acquisition, representation and evaluation of PLC signals such as input, output, flags, timer, counter and data of data blocks, is now very easy.

Live display allows the observation of the signal waveform in real time. Analysis and evaluation can already be carried out at the time of recording. In addition to long-term recording, trigger conditions can be specified for the acquisition of particular events. This allows rarely occurring sporadic errors to be specifically recorded for later analysis.

PLC-ANALYZER pro 6 has the decisive advantage of recording process data via standardized PLC interfaces. For example, for SIMATIC S7 signals can be acquired using MPI/PPI, PROFIBUS or TCP/IP PROFINET. All CoDeSys communication paths and many other PLC connections of various manufacturers are supported. A programming device or notebook, that is connected for the purpose of programming the PLC, can be used for recoding process data without modification. By means of high-performance PLC drivers (in-house development) the **PLC-ANALYZER pro 6** achieves sampling rates, which would not be possible with an OPC-UA-based solution.

Cycle-precise recording is attractive because of the complete acquisition of measured values in each PLC cycle. Up to 16 million variables from 250 signal sources can be recorded simultaneously.

PLC-ANALYZER pro 6 simplifies the signal selection by using symbol files or projects of the PLC programming software. Loading a TIA / STEP7 project makes all settings and variables immediately available. Symbols can also be imported directly from the TIA PLC.

The **Videotrack module** provides additional visual support for troubleshooting by video recording synchronous to the PLC signal acquisition. This is a great help for error analysis on machines and systems, since the mechanical situation can be viewed syn-

chronously with the process data using the video frame.

The **Virtual HMI module** helps to clarify plant accidents when human operators are involved. The subsequent HMI visualization from recorded process data makes it easier to detect possible operating errors.

By using the measurement interface **AD_USB-Box**® external voltage and current signals, which are not available in the PLC, can also be recorded. This is also very helpful in case of the demand of capturing I/Os from PLCs, for which a specific PLC driver is not available.

For a direct **PLC-ANALYZER pro 6** integration in the plant, AUTEM offers the ultra compact **BLACKBOX 4 Edge**. This special IPC allows autarkic process data archiving over long periods of time. Thanks to numerous remote connection possibilities - 4G LTE-Modem, WAN, LAN - the **BLACKBOX 4 Edge** is perfectly suitable for machine remote service.

PLC-ANALYZER pro 6 is an indispensable tool for PLC software development, construction, installation, maintenance and training.

AUTEM offers a customer-friendly licensing concept (incl. maintenance & support) with primary and additional licenses for the equipment of one or more workstations. For prices and part-numbers please refer to our current price list.

Technical Features

- All-in-One: Project setup, recording, analysis in one tool
- Pure software solution: No special additional hardware required
- No changes in the PLC program necessary
- Data recording via existing connection to the PLC (Ethernet TCP/IP, serial, Fieldbus, ...)
- High-performance sampling by specific PLC drivers
- Recording of input, output, flag, timer, counter, peripheral, data of data blocks and other PLC variables
- Use symbols directly from the PLC programming software, e.g. load TIA projects and use symbols / settings
- Import symbols also directly from TIA PLCs
- Optimized data blocks (S7 1200/1500): Variables direct readable
- bit-, byte-, word-, double- or quad-word format
- Pseudo signals: generating of virtual signals by [complex] calculation from recorded signals
- Simultaneous acquisition from several PLC systems / also different manufactures (e.g. SIMATIC S7 + CoDeSys)
- Up to 250 signal sources / 16 million variables
- Videotrack: Camera recording synchronous with PLC signal capturing
- Cycle precise recording for different PLC systems
- Supports PC based PLC (e.g. Beckhoff TwinCAT) and PLC simulators (e.g. S7-PLCSIM)
- Recording modes: continuous recording, trigger-, time-controlled
- Enable/Disable of addresses and triggers during recording
- Real-time live display of signals
- Comfortable PLC signal selection for signal window by drag & drop
- Analysis of signal data possible while recording
- Highly accurate display of signals with short-term fluctuations of measured values („spikes“)
- Comfortable trigger definition by drag & drop
- Trigger on binary and register values with AND/OR/XOR/RS and cascading
- Pre- and post-trigger time freely selectable
- Extensive trigger actions: Notification (E-Mail, SMS, acoustic announcement, pop-up-window), any PC-commands
- Comparing of signal files
- Search function: search for trigger, edge, bit pattern, register values, time and notes - even across several signal files
- Time difference measurement and automatic bit measurement
- Relative and absolute data-time
- Flexible signal scaling and normalization - e.g. conversion in physical units or min-max-adjustment of measured value
- Number format: decimal, hexadecimal, binary, ASCII, REAL (floating point), S5-TIME, TIME, DATE, DATETIME
- Projects for pre-configuring and automating data acquisition runs
- Extreme robust and compact file format
- Multiple data targets at the same time: simultaneous writing of e.g. signal file and CSV file
- Export of signal files: PDF, CSV, Excel, HTML, graphic formats
- Import of CSV files: visualisation of other measure values
- Printing of signal files and measurement configuration
- Multilingual user interface: German / English
- System requirements: Microsoft® Windows 7/8/10/11 (32/64-Bit)
- **AD_USB-Box®** (optional): Recording of external voltage and current with external box connected via USB
- **Videotrack module** (optional): The Videotrack module enables video recording time-synchronous to PLC signal capturing.
- **Virtual HMI module** (optional): Subsequent HMI visualization from recorded process data.
- **BLACKBOX 4 Edge** (opt.): Ultra-compact special IPC for control cabinet; long-term process data recording, monitoring, remote maintenance

PLC-Driver



Siemens SIMATIC S7 / TIA *

Ethernet TCP/IP / PROFINET (cycle precise**)

Siemens SIMATIC S7 / TIA

MPI/PPI + PROFIBUS (cycle precise**)

Siemens SIMATIC S5 / SINUMERIK

Progr. interface (cycle precise**) / Ethernet TCP/IP

Siemens LOGO!

Programming interface / Ethernet TCP/IP

Siemens SIMOTION C/P/D

MPI / PROFIBUS / Ethernet TCP/IP (servo cycle p.)

CoDeSys

All common protocols (e.g. Ethernet TCP/IP, CAN)

BECKHOFF TwinCAT

Ethernet TCP/IP

OPC UA

Ethernet TCP/IP

B&R

Serial / Ethernet TCP/IP

PILZ PSS / PNOZ

Programming interface

PILZ PSS / PNOZ

Ethernet TCP/IP

Allen-Bradley ControlLogix / PLC / SLC

DF1 / DH+ / DH-485

Allen-Bradley Compact/ControlLogix / PLC / SLC

Ethernet TCP/IP

PHOENIX

Ethernet TCP/IP (cycle precise**)

BOSCH CL

Programming interface (BUEP19E)

GE Fanuc Serie 90 / VersaMax / Nano / Micro

Programming interface (SNP)

GE Fanuc CNC / PMC

HSSB / Ethernet TCP/IP

Fanuc R-30i / R-J3i

Ethernet TCP/IP

OMRON C / CV / CS1 / NJ / NX / NY / CJ2

Programming interface (Host Link) / Ethernet TCP/IP

MITSUBISHI MELSEC Q / L / A / FX

Programming interface

MITSUBISHI MELSEC Q / L / A / FX

Ethernet TCP/IP

Schneider Modicon TSX Quantum / Momentum

Compact - Modbus I / Modbus Plus

Schneider Modicon TSX Quantum / Momentum

Compact / M - Modbus TCP/IP

Schneider Modicon TSX Premium / Atrium

Micro / Nano - Uni-Telway / TCP/IP

Schneider AEG TSX A250 / A120 / Micro

Programming interface (KS)

Selectron

Ethernet TCP/IP

Jetter JetControl / Delta / Nano

Serial / Jetway / PC-PPLC / Ethernet TCP/IP

HITACHI H / EH-150 / Micro-EH

Programming interface / Ethernet TCP/IP

Videotrack module

Software driver for IP / GigE Vision / USB cameras

Virtual HMI module

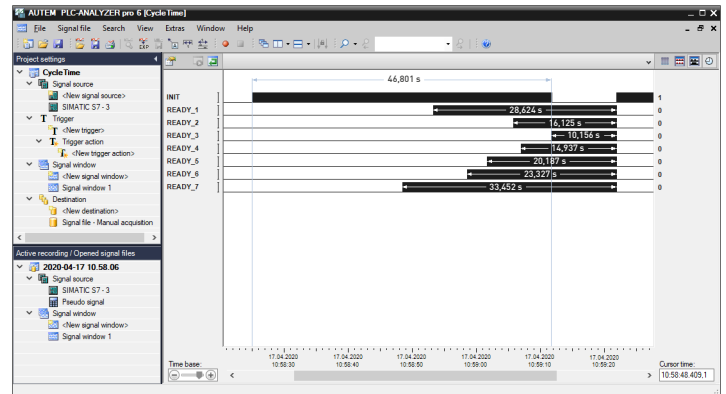
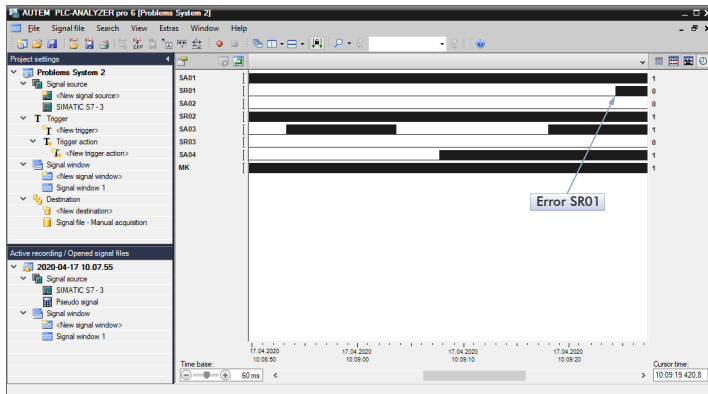
Subsequent HMI visualization from process data

AD_USB-Box®

USB-Port (recording of ext. voltage and current)

* TIA compatible, also suitable for SIMATIC C7, M7, S7-PLCSIM, SINUMERIK ONE / S7, VIPA S7, Insevis S7, Yaskawa SILO/300S+
 ** depending on PLC type

Typical fields of application

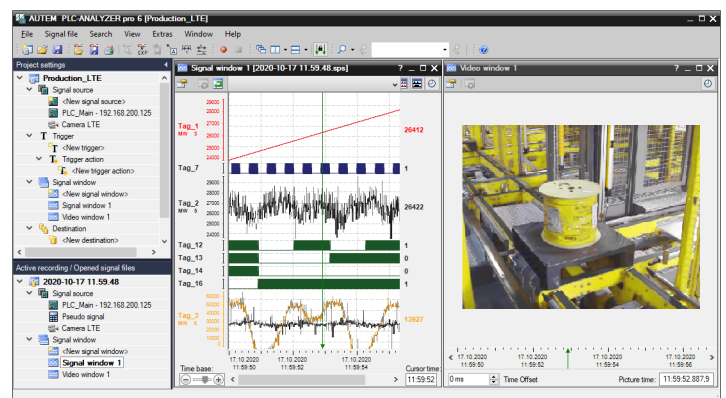
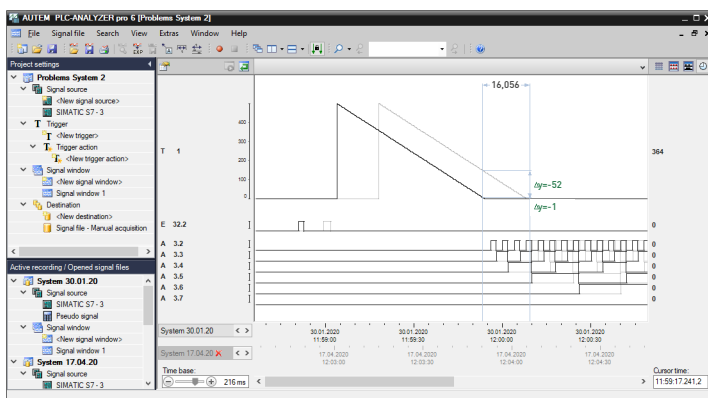


Diagnosis of sporadic faults

By focused monitoring of relevant signals, the sporadic error can be captured and the associated components are effectively isolated.

Cycle time optimization

The investigation of delay times of a production system, e.g. by exact measurement of acknowledgement signals, supports actions to optimize the machine.

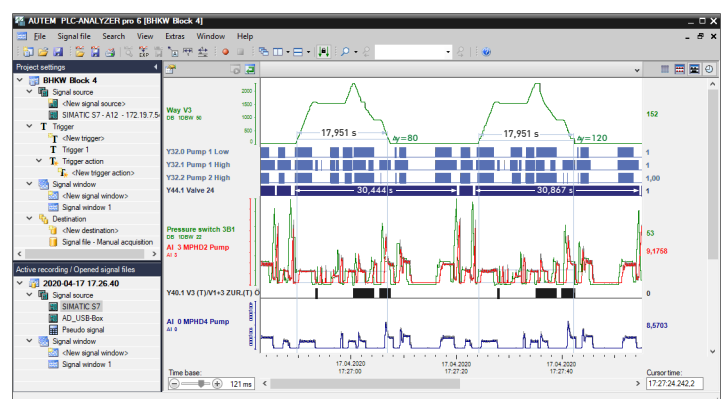
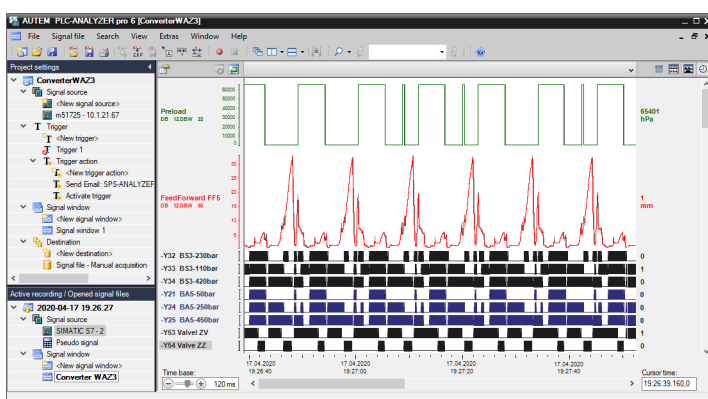


Condition monitoring

The target/actual comparison of the runtime behavior of the system allows to draw conclusions regarding possible failures and serves as a basis for preventive maintenance.

Troubleshooting with video support

With the time-synchronous video track - in addition to the PLC process signals - troubleshooting is meaningful supported in many cases.



Machine documentation

Machine manufacturers and customers can document the runtime behavior of the system down to the finest detail and check or verify specifications.

Warranty questions

The objective measurement and recording of the process signals allows unambiguous clarification of responsibility in warranty issues.